



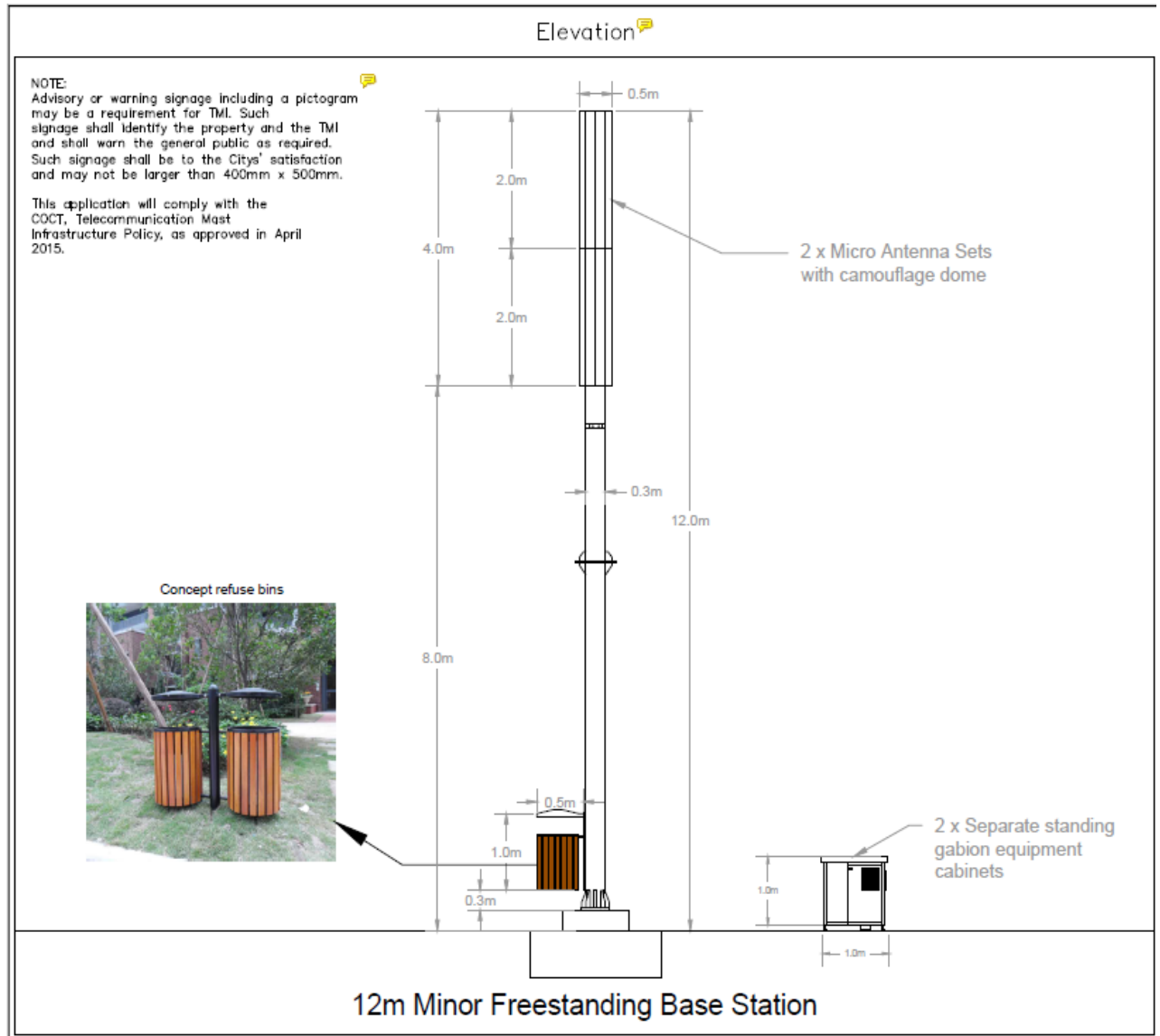
CITY OF CAPE TOWN
ISIXEKO SASEKAPA
STAD KAAPSTAD

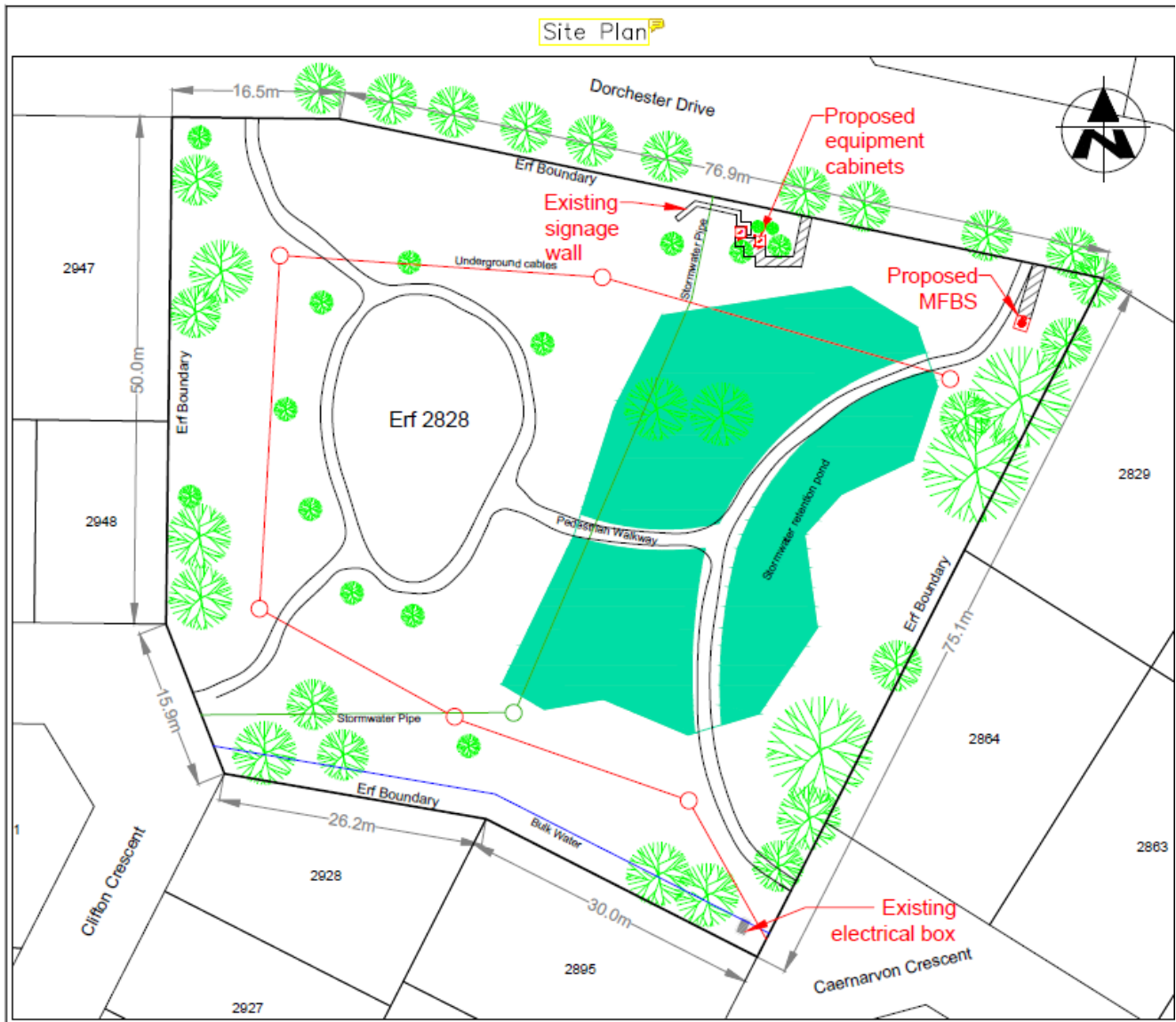
INFORMATION STATEMENT

PROPOSED LEASE OF PORTION OF ERF 2828 PARKLANDS, 33 CLIFTON CRESCENT FOR A 12 METRE MINOR FREESTANDING BASE STATION: RICH REWARDS LEASING (PTY) LTD

- a) Reason: a small portion (of $\pm 4.4\text{m}^2$) is required for the installation of Telecommunication Infrastructure.
- b) Expected benefit: it will provide improved and uninterrupted telecommunication services (for wireless/LTE connectivity);
- c) Expected proceeds: that the City will receive a market related rental of R5 359, 57 for the proposed lease for Telecommunication Infrastructure purposes;
- d) Expected gain or loss: no loss will be incurred by the City arising from the granting of right; only gaining improved and uninterrupted telecommunication services.
- e) The proposed transaction included a call for alternative proposals for the same intended usage. The call for alternatives is not limited to a single bidder. This should include the proposed rental, visual impact, landscaping and public amenity.







Dimensions shown
are approximate.

LABEL	LENGTH [metre]
AB	1.12
BC	1.13
CD	1.12
DA	1.13
EF	1.12
FG	1.13
GH	1.12
HE	1.13
JK	1.36
KL	1.36
LM	1.36
MJ	1.36

PROPERTY LEASE OUT PORTION OF PARKLANDS - ERF 2828

33 CLIFTON CRESCENT PARKLANDS

ERF: 2907

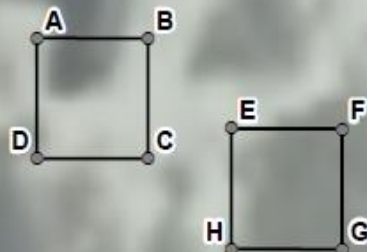
ERF: 6872
ERF: 3227-RE

ERF: 1975-RE

TOTAL LEASE
AREA: 4.4 m²

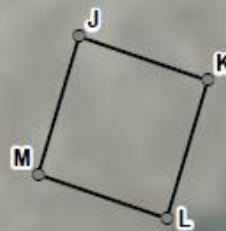
ERF: 2828

MAP INSET 1



Scale: 1:50

MAP INSET 2



Scale: 1:50

Aerial Photo: 2023 Jan (30% Trans)



Legend

Eskom Services

- ESKOM - Existing LV Underground Cable
- ESKOM - Existing MV Underground Cable
- Elec - Underground Cables
- Water - Hydrants Reticulation
- Water - Valves Reticulation
- Water - Reticulation Connection
- Water - Mains Reticulation

- Sewer - Connection Line
- Sewer - Manholes
- Sewer - Mains Reticulation

Stormwater Junction

- STW - Manhole
- Catchpit
- Stormwater Inlet Outlet

Stormwater Conduit

- STW - Pipe
- LEASE AREA

Property

- Registered

Notes:

Application for a Telecommunication Lease

1) The figure ABCDEFGHJKLM represents a portion of registered ERF 2828 PARKLANDS, LAND PARCEL KEY 797670, ZONING SCHEME Open Space 2 : Public Open Space in a total extent of approximately 4.4 m² owned by City Of Cape Town.

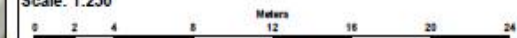
2) Title Deed No. T 53551/2003.

3) Please note Eskom is the supplied authority for electricity within this area. The Eskom services indicated on the map should be regarded as approximate only.

4) The figure ABCD and EFGH represents the proposed equipment cabinets measuring approximately 1.27 m² respectively and figure JKLM represents the proposed base station measuring approximately 1.85 m² in extent.

Ward Number: 107, Subcouncil: 1

Scale: 1:250



Drawn By: MISHKAAH JATTIEM
Email: Mishkaah.Jattiem@capetown.gov.za

Telephone: +27 (0) 21 400 2948
Date: Thursday, 18 July 2024



CITY OF CAPE TOWN
ISIXHO SASAKAPA
STAD KAAPSTAD

City Of Cape Town Metropolitan Municipality
Property Management: GIS and Surveys
Civic Center
Cape Town
8001

Tel: +27 (0) 21 400 2226
Email: mashudu.mudau@capetown.gov.za

Project Manager: Gary Dammert

Email: Gary.Dammert@capetown.gov.za

Plan Number: LIS2989

Case Number: 130007989

Disclaimer
City of Cape Town accepts no responsibility for the accuracy or completeness of the data presented on this map and will not be held liable for damages, including loss of profits or consequential damages, arising out of the use of this information.

Please note this is an A3 map.
To view the map print out in scale it must be printed on an A3 page.